

PART OF THE S.E. 1/4 OF SECTION 29, T.7N., R.1W., S.L.B. & M.

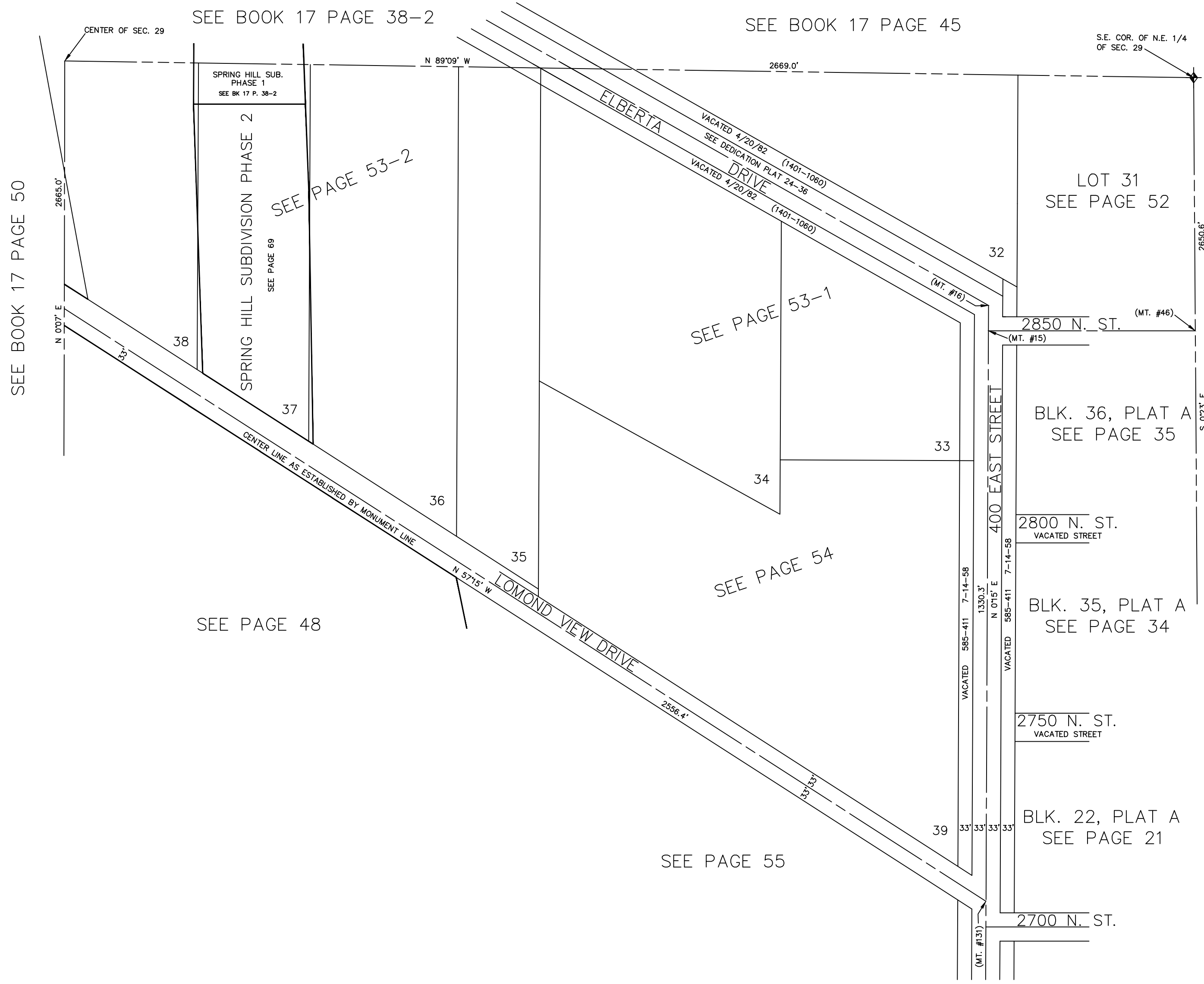
# NORTH OGDEN

LOTS 32 TO 39, PLAT "B"

IN NORTH OGDEN CITY

SCALE 1" = 200'

TAXING UNIT: 10



NOTE: SEE ORIGINAL PLAT IN BOOK 5, PAGE 79